

## PRELIMINARY PRODUCT INFORMATION

**NEW**

### On-line CIELAB Colorimeter

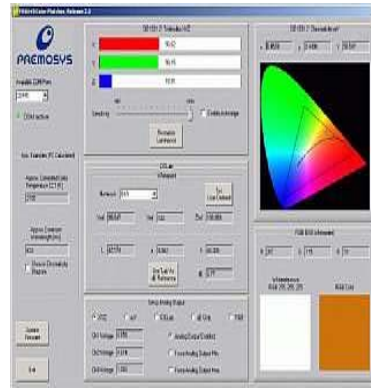
MODEL 5010



SIDE VIEW



INSIDE VIEW



SOFTWARE

### LOW COST COLORIMETER

New small size, low cost colorimeter designed for on-line color measurement. Sensor operates at temperatures up to 130-degrees F. A Janda "KISS" design (Keep it Smart and Simple).

### Some important features

- Accurate Low Cost OnLine Colorimeter.
- Reads CIELAB values.
- Small size 4-inch diameter by 6-inches tall.
- Reads large 80mm diameter spot
- Distance up to 5-inches above line.
- High speed reads 5 measurements per second.
- Data streams into an Excel spread sheet.
- Several instruments can be "Daisy-chained" on the same RS-485 line.
- Estimated 12 year life light source.
- Air curtain to keep contaminants out of instrument.
- Ambient light correction.
- Operates up to 130-degree F.

**OnLine Color 5010**

**Instrument to Measure Color On-Line**

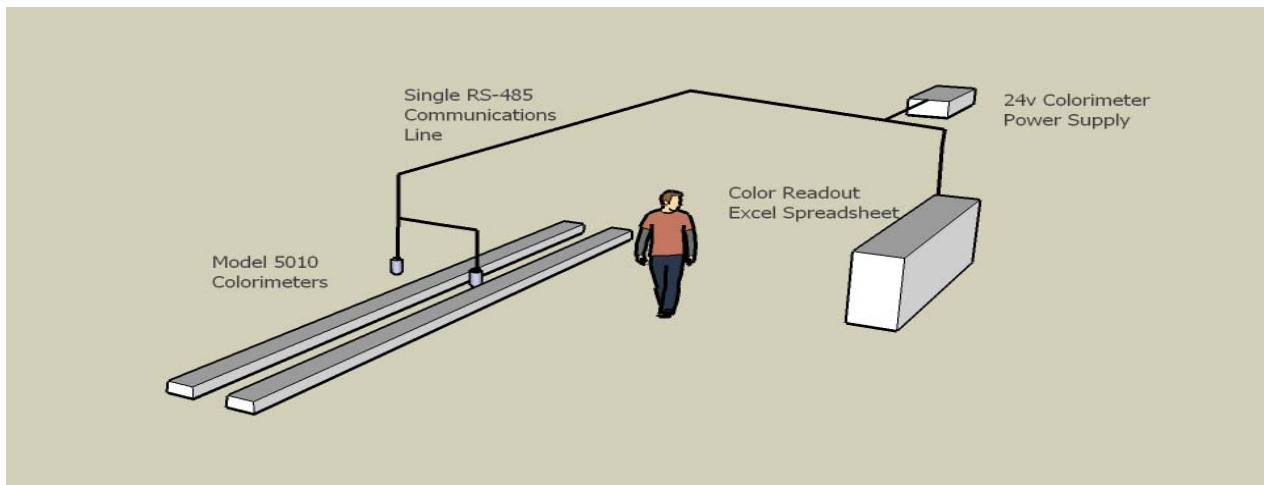
## SPECIFICATIONS

- d/0 (Wide area illumination/0 degree read geometry).
  - Reads Specular component included (SCI).
  - Illuminate "C" with 2° observer.
  - 400-700nm visible range.
  - Color values closely matches CIELab 1931.
  - Output CIELab, Chromaticity and Tristimulus values.
  - Long life LED illumination light source ~ 12 years.
  - Operating range 10°C to 55°C (50°F to 130°F).
  - Inter-instrument agreement better than +/-0.45 dE.
  - Repeatability within 0.2 dE on white calibration plate.
  - Calibrated distance for CIELab 70mm (2.75-inches).
- Distance to sample 25 to 122mm (1 to 5-inches).
  - Measurement spot 80mm diameter.
  - Ambient light corrected out of color reading.
  - Measurement rate 5 readings a second.
  - Data stream feeds directly into an Excel spreadsheet.
  - Communications via RS232 or RS485.
  - Sensor to Computer distance up to 1219m (4000 ft).
  - Air curtain keeps contaminants out of instrument.
  - Optional
    - Distance gauge for irregular height objects.
    - Polycarbonate window.
    - Stainless Steel housing for food applications.

## SYSTEM CONSISTS OF:

- The 5010 online sensor.
- Mounting clamp for sensor.
- White calibration tile.
- Low voltage power supply.
- A RS485 communications line (20-ft).
- Software to stream data directly into an Excel spread sheet.

## TYPICAL INSTALLATION



Includes one-year software upgrades no charge. One-year software and applications support by telephone no charge. Applications support after first year available. Extended warranty available.

**Specifications subject to change without notice.** Microsoft Windows 98, 2000XP, Excel and NT are trademarks of Microsoft Corporation. Preliminary data sheet dated March 1, 2007